

APRIL 2023-MAY 2023

WINATHUM

Newsletter for the Nüümü Yadoha Language Program

Successful 2023 Inyo Language Gathering, Bishop Site



This issue:

Highlight

PAGE 01

Kern County

PAGE 02

Fresno County

PAGE 03

Tulare County

PAGE 04

Mono County

PAGE 05

Language Classes

PAGE 06

Language Classes

PAGE 07

Inyo County

PAGE 08

Fresno County

PAGE 09

Fresno County

PAGE 10

Nüümü Yadoha Staff

PAGE 11

*Family Formation By Preserving
Our Language & Culture*

Shimá

Shimá

Amá Béehániih
Happy Mother's Day

Navajo classes
Join us via WebEx
Virtually
Tuesdays &
Thursdays
4pm-5pm

For information contact the Language Dept.
@ (861)323-1086 or email
mortega@ovdc.com or
rgrodriguez@ovdc.com

Honoring our Native Fathers & Male Role
Models through Family Formation

June 7 - 21, 2023
Workshops will be virtual

June 7th: Program and Curriculum Overview 5:30-7:00pm
June 14th: Basic Car Maintenance 5:30-7:00pm
June 21st: Virtual Family BBQ 5:00-7:00pm
****MUST ATTEND ALL WORKSHOPS TO
RECEIVE INCENTIVE ITEMS****

For more information or to sign up contact the
Kern Language Team today at
861.323.1086
mortega@ovdc.com
rgrodriguez@ovdc.com

T'aqachil
FAMILY FORMATION BY PRESERVING OUR
LANGUAGE & CULTURE

APRIL IN NAVAJO IS
T'AQACHIL, WHICH MEANS "LITTLE LEAVES."
IT'S CALLED THIS BECAUSE
AT THIS TIME OF THE YEAR, THE LEAVES AND
PLANTS ARE STARTING TO GROW
AGAIN BUT AT
THIS POINT THEY ARE STILL SMALL.
SMALL/LITTLE LEAVES

JOIN US VIA WEBEX
TUESDAYS & THURSDAYS
4 PM - 5 PM

Contact the Language Dept. at (861)323-1086
or by email at
mortega@ovdc.com or rgrodriguez@ovdc.com



WELCOME SPRING
Learn Spring Words in Western Mono

Scan the QR code to hear teacher Darlene

		Wa'na'paua Butterfly
		Taawano Spring
		Hubiga Flower

Join our Western Mono classes
Tuesdays In Person/Virtual
Contact Darlene for more info
(559) 226-2880



Family Formation through Indigenous Languages

Mono Language

Tuesdays Virtual/In Person 4:30 pm-6pm
Open to Fresno Big Sandy Cold Springs Families

April 4th VIRTUAL
Learn Spring words in Mono

April 11 In-Person
Sunflower Clothes Pin Wreath 

April 25 In-Person
Sunflower Windchime 

Contact Teacher Darlene Oliver for the WebEx link
(559)226-2880 ext.199 doliver@ovcdc.com
5070 N.Sixth Street Suite 110 Fresno CA 93710

Made with PosterMyWall.com

Tulare County



Tulare County Beading Wellness

Tulare County Language would like to give a big shoutout to all our dedicated students who have been attending our Beading Wellness sessions. We have had participation from all 3 sites and many completed projects.

Our instructor for these sessions is Wukchumni Language Teacher Jennifer Malone with assistance from Language Coordinator Crystal Ruiz. Over the past few months students worked on fedora hats and feather designed earrings. Jennifer infuses each session with Wukchumni Language related to each project.

These sessions have provided a space for our participants to engage in a healthy activity which encourages mindfulness and helps reduce stress and anxiety. Many students have expressed how our sessions are their "Me Time." Many have picked up beading as a new hobby, create items in their spare time and are excited to bring them into class to share.

If you are interested in joining in on our upcoming sessions please contact our office at (559)738-8248 ext. 420.



**Family Formation by Language
and Culture Enrichment**



Loom Beading Workshop

In Person Sessions held at

1401 W. Caldwell Ave. Visalia, CA 93277



Beginner class to
learn how to bead on
a loom and
Wukchumni
Language.



April

Tuesday, 4/4 from 11am-1pm

Tuesday, 4/11 from 11am-1pm

Tuesday, 4/25 from 11am-1pm

Space is limited. To sign up please contact:

Crystal Ruiz (559) 738-8248 Ext. 420. or cr Ruiz@ovcdc.com



Hooo'ooyeipu

1. Moo'o'asoo, tooihimma pasaga'a; kai powmana, kai tuggwana; yaa diipu pasa yei.

Yeishikoo munumu mii nanishookwuga'i,

3. "Ti Naa'a, pija mii sooduhe, koo diipu pija masami;

4. powmado (pa-hoo-ma-do)! Powmado!" miihyoo oi'yoopana .

5. O'no yeishi huggwa-pitu; tommobu kimma, powma kimma;

6. tugwukwitsiva-yeihooka, tommoyakakooha, nunu'uyei duwaz.

7. O'no yeishi munumu pija manigweiz, yaa diipu, moo'asoo.

An Extreme Flowing

1. Long ago everything was drying up; there was no rain, there had been no snow;

the earth was becoming extremely dry.

2. So after this was collectively understood, the people began to cry out in prayer,

3. "Our Father (which created us and watches over us), be merciful to us, cause a favorable outpouring of moisture upon the land;

4. Cause the water to flow upon us (from above)! Make it rain!" that is what they all collectively spoke.

5. And then the wind came; the clouds began to gather, the rain came;

6. lightning fiercely crashed, the thunder also began to roll, it was a fearful moment.

7. And then the people were in a better state of happiness and goodness here on this earth; this occurred long ago (but it is also happening now).

Northern Paiute Language class

Every Monday (excluding holidays) at 5:30 pm

Inyo/Mono County Language Classes

NORTHERN PAIUTE LANGUAGE CLASS

Taught by: Joseph Lent
Mondays @ 5:30pm- Virtual

PAIUTE LANGUAGE CLASS

Taught by: Jamie Meredith
Tuesday's @ 6:30pm-Virtual
Thursday's @ 12:00pm- Virtual

✦ Big Pine Class-Tudupi with Elders
Wednesdays @ 11am- ASMG

Taught by: Glenn Nelson

✦ Bishop Language Building
Monday's & Wednesdays @ 5:30pm
Saturday's @ 9am-Virtual

✦ Taught by: Lavina Banning
Bishop Language Building
Tuesday's @ 5:30pm

Taught by: Phillip Kane
Monday's @ 6:00pm-Virtual
Friday's @ 5:00pm-Virtual

✦ Lone Pine Community Class
Wednesdays @ 5:30pm

For more information
please contact:

Inyo County
(760) 873-5107 ext. 174
or
(760) 872-3604

✦ In-person class



Kern County Language Classes

NAVAJO IMMERSION LANGUAGE CLASS

Taught by: Elaine Johnson & Marlene Ortega
Tuesday's & Thursday's @ 4:00pm- Virtual

PAKANAPUL LANGUAGE CLASS

Taught by: Betsey Johnson
Tuesday's & Thursday's @ 3:00pm-4:00pm- Virtual

Tulare County Language Classes

WUKCHUMNI LANGUAGE CLASS

Taught by: Jennifer Malone & Katie Icho
Monday's @ 11:00am- Virtual

✦ Thursday's @ 4:00pm
OV CDC Visalia Office

Fresno County Language Classes

WESTERN MONO LANGUAGE CLASS

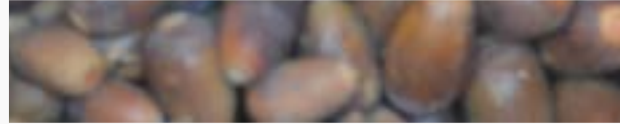
✦ Taught by: Darlene Oliver
Tuesday's @ 4:30pm-6pm
OV CDC Fresno Office & Virtual

For more information
contact:

Kern County
(661) 323-1086

Tulare County
(559) 967-0940

Fresno County
(559) 226-2880



Postpositions in Nüümü-Paiute Owens Valley

Paiute postpositions are a group of words said after a noun, pronoun, or noun phrase to show direction, time, place, location, and spatial relationships. They are especially important in Our Language for explaining the use of things. Take a quick look at some of the examples that show how postposition words work in the Owens Valley Paiute Language.

Paiute postpositions are said after the word.

Nobi-gwee (to/in the house)	Toya-ma (on the mountain)	Nüba-‘aga (in the snow)
Nüü i-nobi-gwee mia-ti.	Nüü toya-ma katü-dü.	Ishabugu-ii nüba-‘aga.
I am going to my home.	I am camping on the mountain.	The dog is in the snow.

The suffix -ddu is added to the postposition words to show movement away from that position.

Nobi-gwee-ddu (from home)	Toya-man-ddu (from on the mountain)	Nüba-‘aga-ddu (from in snow)
Nüü nobi-gwee-ddu kima-ti.	Nüü toya-man-ddu kima-ti.	Nüba-‘aga-ddu yotsi-ti.
I’m coming from home.	I came down off the mountain.	Jumped out from within snow.

The suffix -tugu is added to the postposition words to show movement up to that position.

Nüü nobi-gwee-tugu poyoha-wei. I’ll run up to the house. (Could also mean) I’ll run into the house.
Nüü toya-man-dugu tüzamiagü-wei. I’m going to take a drive up onto the mountain.
Ishabugu-ii nüba-‘aga-tugu tsupa-ka’. The dog sunk into the snow.

The suffix -ddu also tells the place of the main person in the sentence (subject).

Nobi-gwee-ddu ishabugu-ii ta-naka-ti hupinagwa-kku.

The dog is inside the house, hearing us outside.

Hanno-ddu-wa’ üü namanayaha-ku?

Hanno-kko-wa’ üü namanayaha-ku?

Where did you get injured (where were you)? Where did you get injured (where’re you injured at)?

Postposition words are important because our language doesn’t have many “modern” names for things. Many of the old people would describe the use of things using these postposition words.

For example:

Nüümü-na a-wee-ddu a-ddotsi-nna. What the people fly in (airplane).

A-mama tei-dawa-neika tei-dübatsaga-nna. That’s what we brush our teeth with (toothbrush).

**BIG SANDY, COLD SPRINGS + FRESNO
OVDC PARTICIPANTS!**

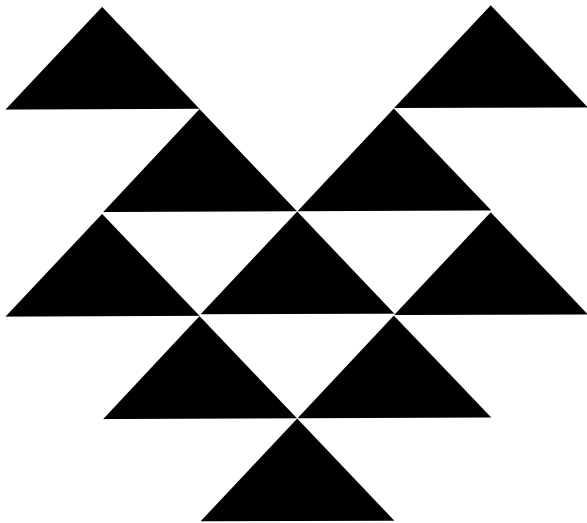
Earn a language wellness item
while supplies last!



Program mugs, totes, hats, beanies, chargers,
bluetooth speakers & MORE!

Complete our feedback survey

You can scan the QR CODE or
Follow this LINK <https://forms.gle/PuEzqRnBtcSfeJ2z6>
Fresno County Language Team
(559) 226-2880



Family Formation Through Cultural Practices

**HAPPY
Mother Earth
DAY**

**Join Our
EARTH DAY
CHALLENGE**
#Earthday2023

Open to Big Sandy
Cold Springs &
Fresno OVDC
Families

Submit Photos to
pdavila@ovcdc.com

Paula Davila
(559) 226-2880

Submit photos during
the month of APRIL
& share how you
are taking care
of our Mother
Earth

Owens Valley Career Development Center
5070 N. Sixth Street suite 110 Fresno, CA 93710



Wukchumni Language Game-KABOOM



If you ask Wukchumni Language Teacher Jennifer Malone what her students favorite Language game to play is, she would definitely say "Kaboom"! Kaboom was created by her student, Sheila, as a fun, competitive way to learn language. The game pieces consist of flashcards and dice. The flashcards are filled with Language, Take 1's and some have the word Kaboom written on them. You roll the dice and the number you land on is how many cards you pull from the pile. You are then challenged to translate the language on the cards. The more cards you can translate, the more cards you keep which are equivalent to points. If you draw a "Take 1" you are able to steal another players card. Another exciting piece is if you draw a "Kaboom" your turn is over! The player with the most cards at the end WINS!!!



This game reinforces the Language as you hear each student repeat the words, phrases and sentences. It is a game the entire class enjoys. Join in on the fun during our in person classes every Thursday from 4-6pm!

Wukchumni - color by number



- | | |
|---------------------------|-------------------------------------|
| 1 - p'a'aak'ana (grey) | 5 - miht'ech chihmihn (light green) |
| 2 - awaait'us (orange) | 6 - chihmihn (green) |
| 3 - chodod (white) | 7 - muchihk'ihn (brown) |
| 4 - t'aak'wiht'ihn (blue) | |



Nüümü Yadoha Language Program Staff

Language Manager

Gretchen Kern

Inyo/Mono County Staff

Jodi Poncho- Inyo Co. Coordinator

Jamie Meredith- Teacher

Phillip Kane- Teacher

Glenn Nelson Jr.- Teacher

Lavina Banning- Teacher

Joseph Lent- Teacher

Desbah Lewis-Teacher

Awahusu Spoonhunter- E. Archivist Technician

Tammy Andrade- Language Specialist

Tulare County Staff

Crystal Ruiz- Tulare Co. Coordinator

Julie Aparicio- Program Assistant

Juanita Henson- Teacher

Jennifer Malone- Teacher

Katie Icho- Teacher

Kern County Staff

Vacant-Kern Co. Coordinator

Marlene Ortega- Language Specialist

Miguel Carvajal- W. Archivist Technician

Elizabeth Johnson- Teacher

Elaine Johnson- Teacher

Ramona Rodriguez- Program Assistant

Fresno County Staff

Rena Picaso- Fresno Co. Coordinator

Paula Davila- Language Specialist

Darlene Oliver -Teacher



Bishop Office:
432 N. Barlow Lane
Bishop, CA 93514
(760) 872-3604
tandrade@ovcdc.com



NÜÜMÜ YADOHA LANGUAGE PROGRAM
OWENS VALLEY CAREER DEVELOPMENT
CENTER PO.BOX 847
BISHOP, CA 93515

PRESORTED
STANDARD
U.S. POSTAGE PAID
BISHOP, CA
PERMIT NO. 44

OVDC OFFICES CLOSED IN OBSERVANCE OF THE FOLLOWING HOLIDAYS



APRIL 17-21, 2023- OVDC EMPLOYEE GATHERING
MAY 29, 2023- MEMORIAL DAY



Owens Valley Career Development Center

OVDC is a Tribal organization providing Career Education, Family Literacy, Indigenous Language, Early Head Start and Temporary Assistance services to seven California Coastline Tribes, Mono, Kern, Indian, Kings, Fresno and Ventura. We are a dedicated Tribal Organization operating under a reservation of Sovereign Nations providing the opportunity for improvement in the quality of life by focusing on education and self-sufficiency while protecting, preserving and promoting our cultures.

For current OVDC Employment Opportunities,
RFP and Contract Opportunities Visit:
www.ovcdc.com
Or Contact us:
1-800-924-8091

Employment and Job Descriptions:
hr@ovcdc.com

RFP's and Contracts:
contracts@ovcdc.com

Indian preference shall apply pursuant to the prevailing Tribal Employment Rights Ordinance and the Indian Self-Determination and Education Assistance Act 25 U.S.C. § 431-435, & 25 CFR 276.23 and other relevant laws.

Follow us on
facebook



MISSION STATEMENT

THE NÜÜMÜ YADOHA LANGUAGE PROGRAM IS DEDICATED TOWARDS WORKING WITH OUR TRIBAL COMMUNITIES TO PRESERVE, RECLAIM, AND REVITALIZE CULTURAL HERITAGE FOR FUTURE GENERATIONS BY SUPPORTING THE PURPOSES OF TRIBAL TANF.